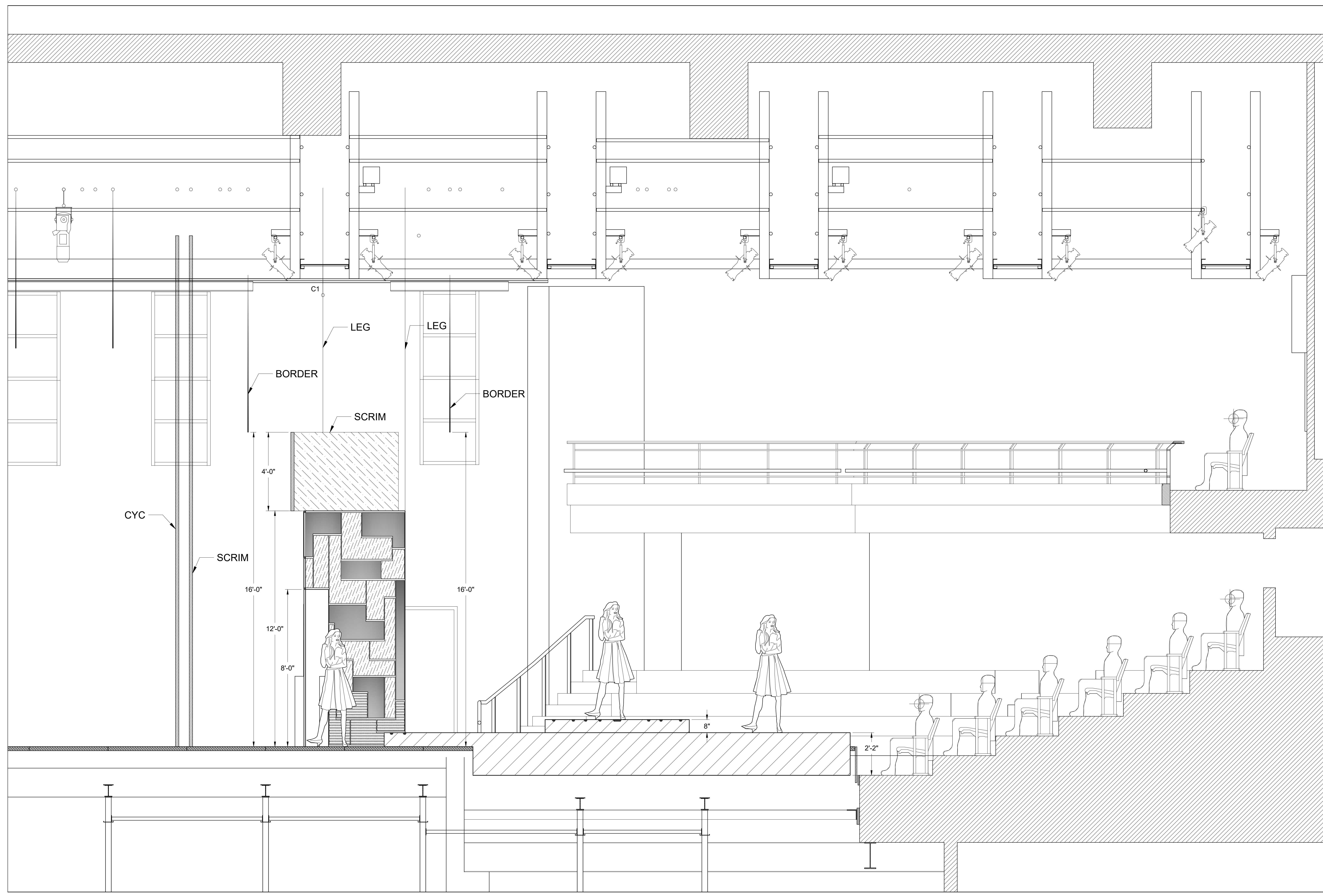
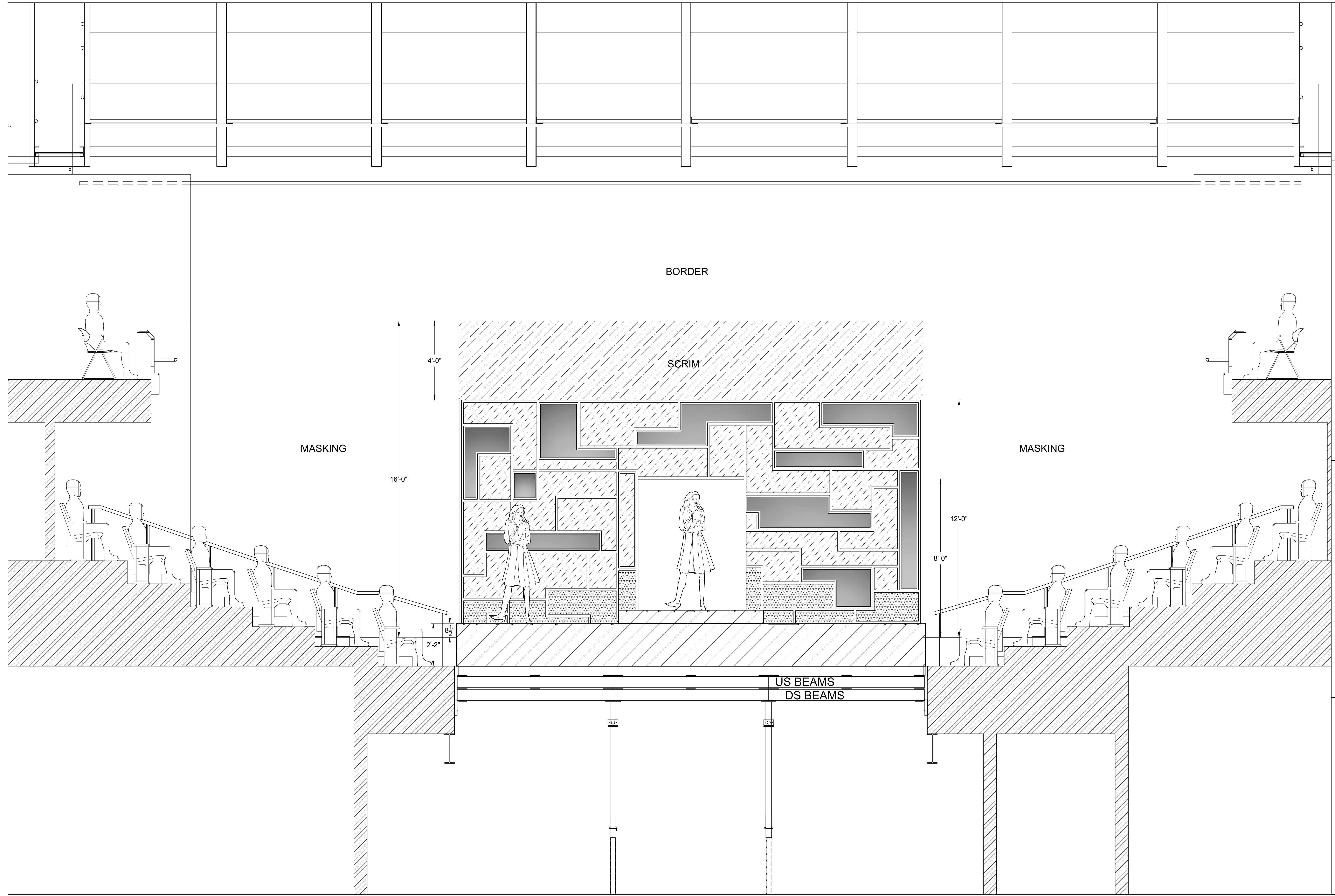


TTS: WATTS	DIRECTOR: BEN RAANAN		D1	OF 6
	DESIGNER: STEVEN ABBOTT			
TECH. DIRECTOR: XAVIER KWONG		GROUND PLAN		02/17/2020
DRAFTED BY: STEVEN ABBOTT		SCALE: 1/2" = 1'-0"		



D2		OF 6
CURIOUS INCIDENT		SECTION
DIRECTOR: BEN RAANAN		SCALE: 1/2" = 1'-0"
DESIGNER: STEVEN ABBOTT		02/17/2020
TECH. DIRECTOR: XAVIER KWONG		
DRAFTED BY: STEVEN ABBOTT		
TTS: WATTS		



D3
OF 6

CURIOUS INCIDENT
FRONT SECTION
SCALE: 1/2" = 1'-0"
02/17/2020

DIRECTOR: BEN RAANAN
DESIGNER: STEVEN ABBOTT
TECH. DIRECTOR: XAVIER KWONG
DRAFTED BY: STEVEN ABBOTT

TTS: WATTS

BORDER

SCRIM

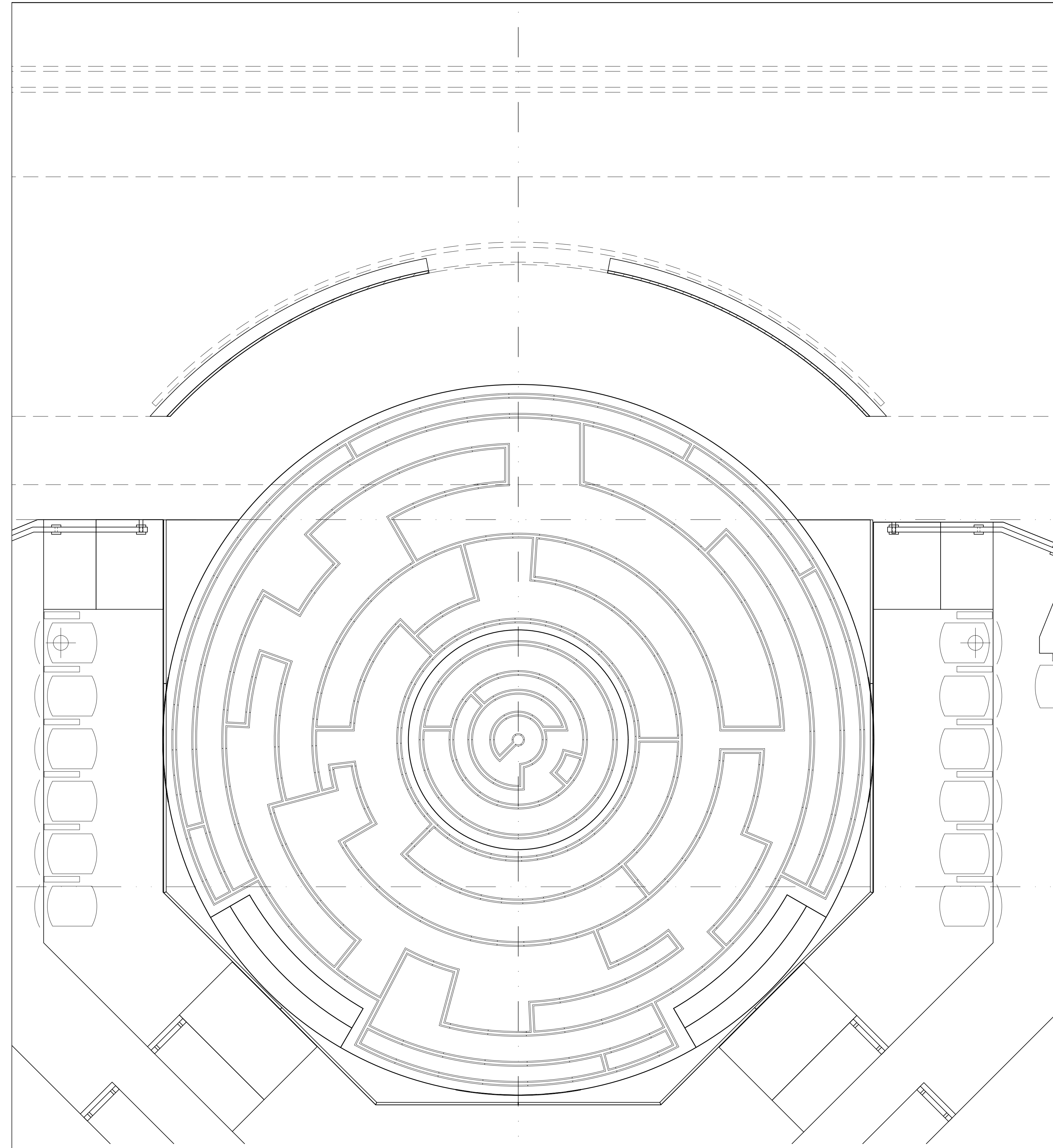
MASKING

MASKING

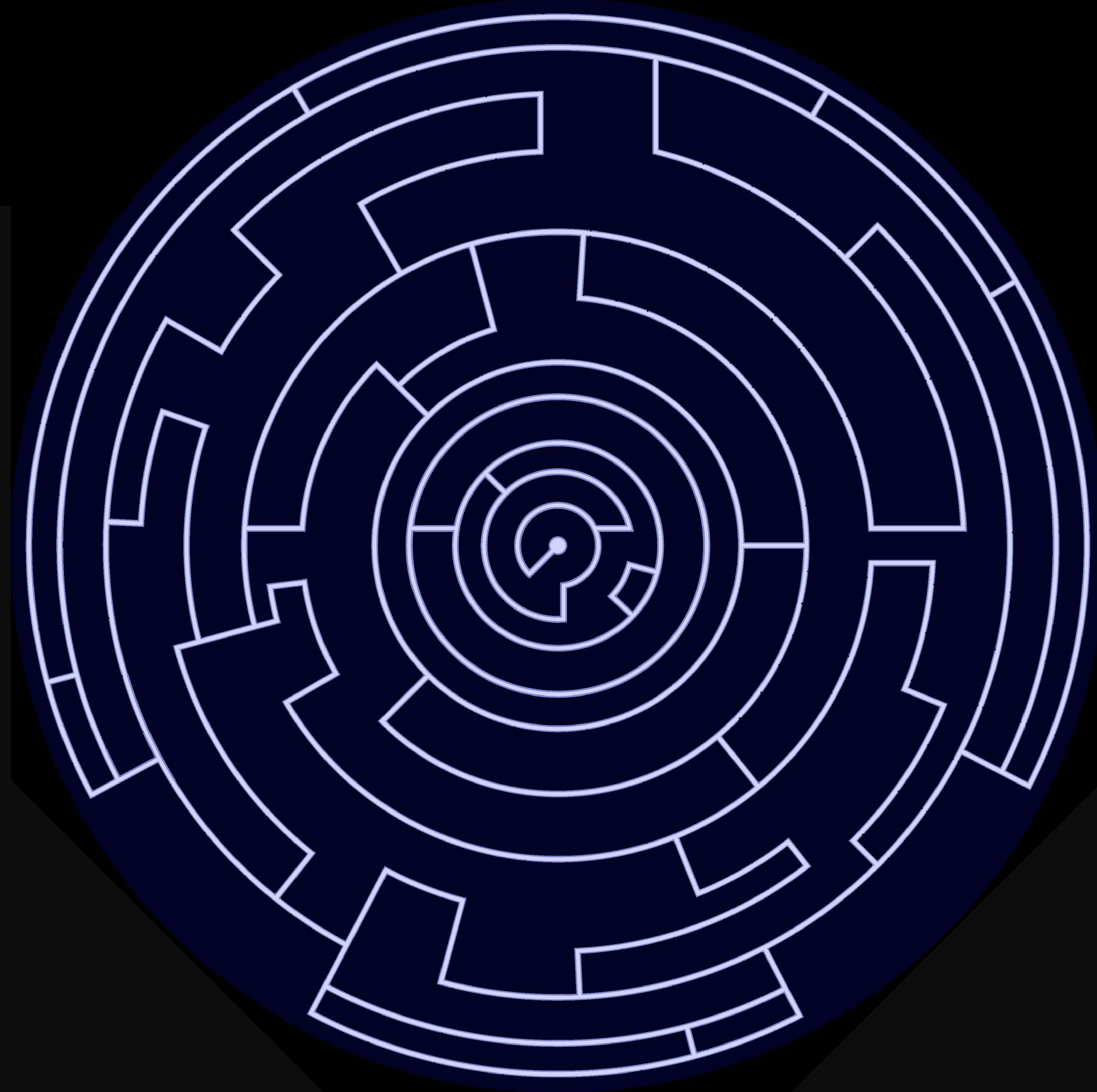
US BEAMS
DS BEAMS

4'-0"
16'-0"
8 1/2"
2'-2"

12'-0"
8'-0"



DECK PLAN
SCALE: 1/2" = 1'-0"

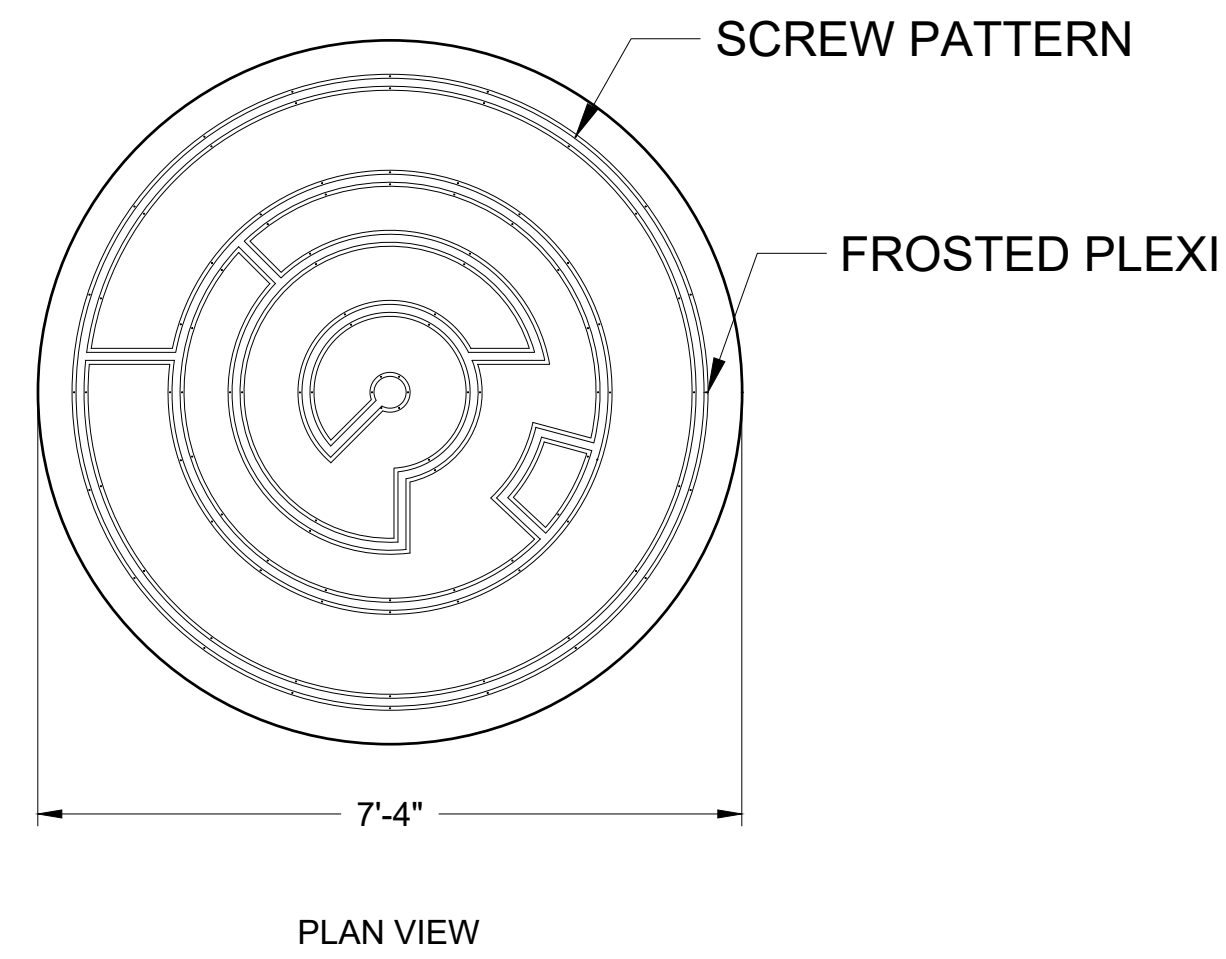
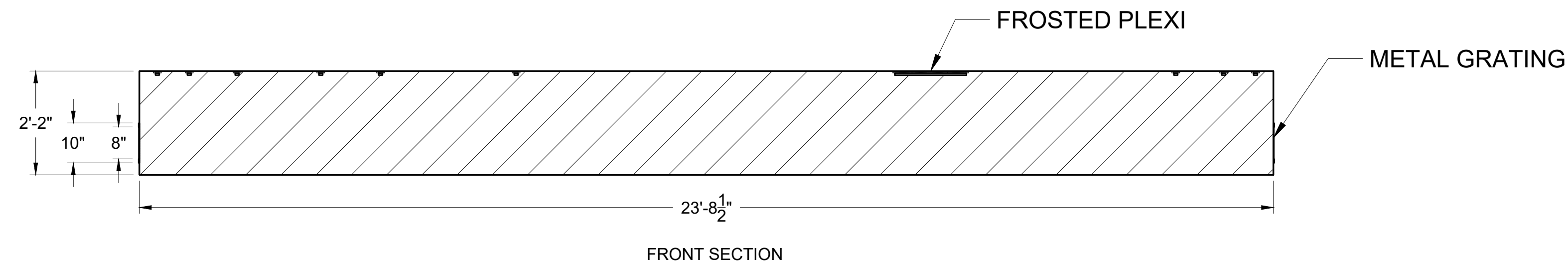
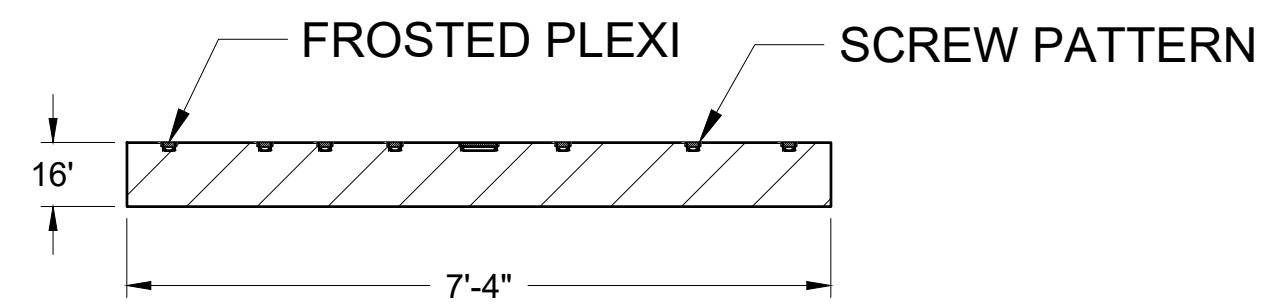
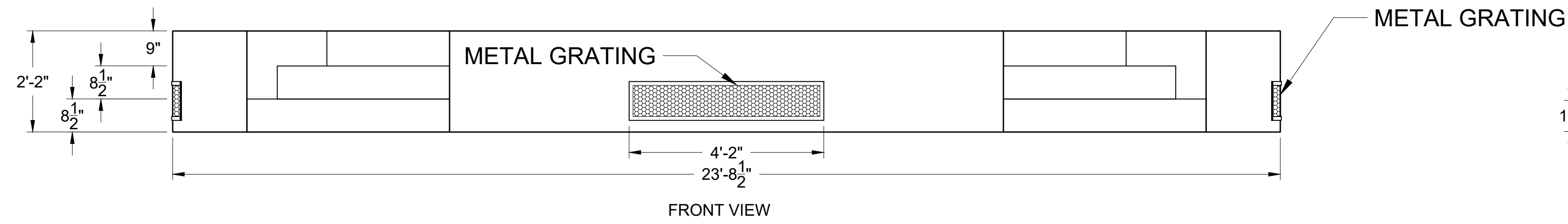


TTS: WATTS

DIRECTOR: BEN RAANAN
DESIGNER: STEVEN ABBOTT
TECH. DIRECTOR: XAVIER KWONG
DRAFTED BY: STEVEN ABBOTT

CURIOUS INCIDENT

DECK PLAN
SCALE: 1/2" = 1'-0"
02/17/2020

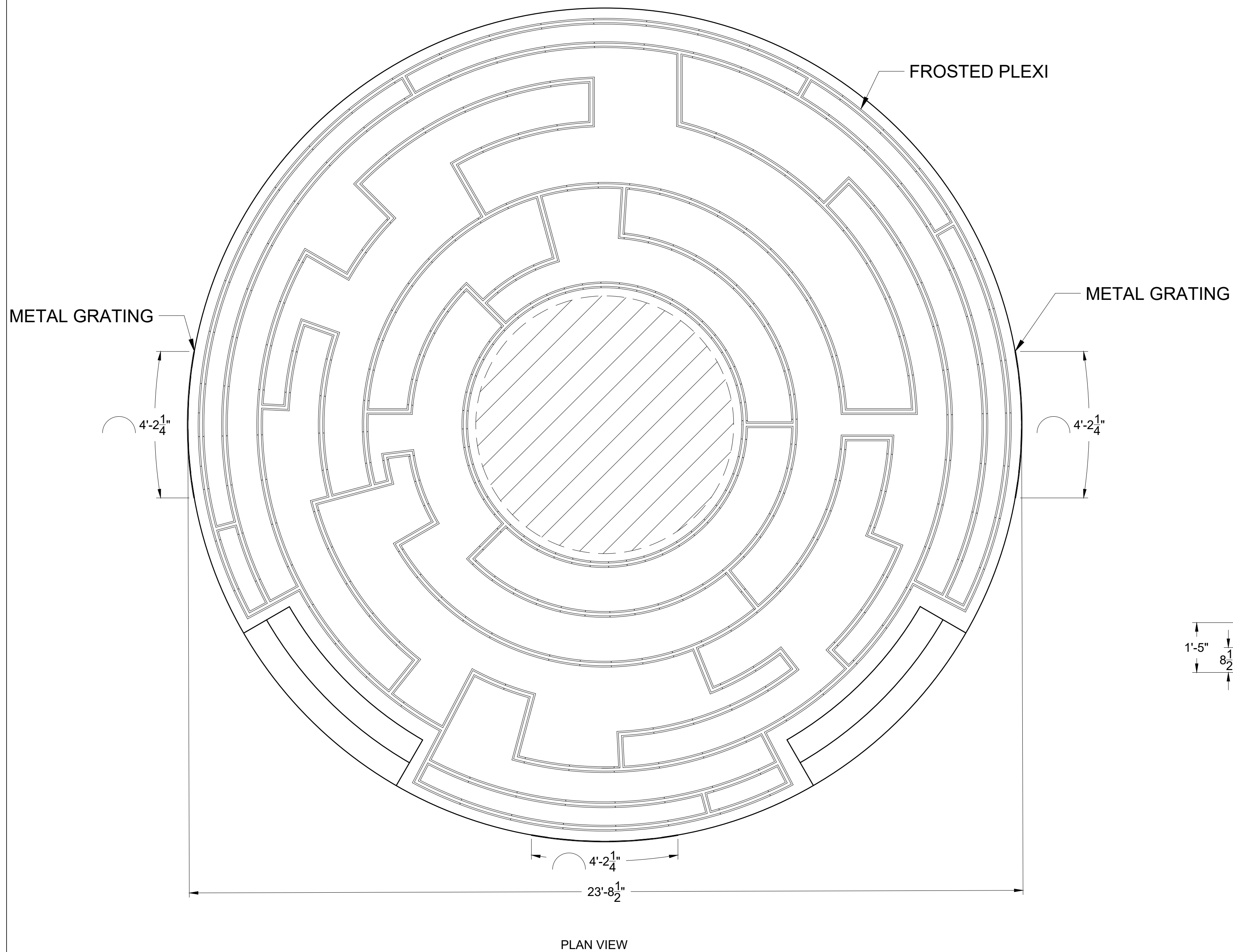


NOTES:

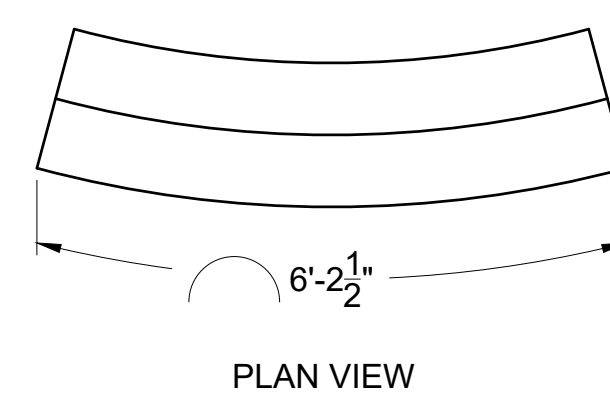
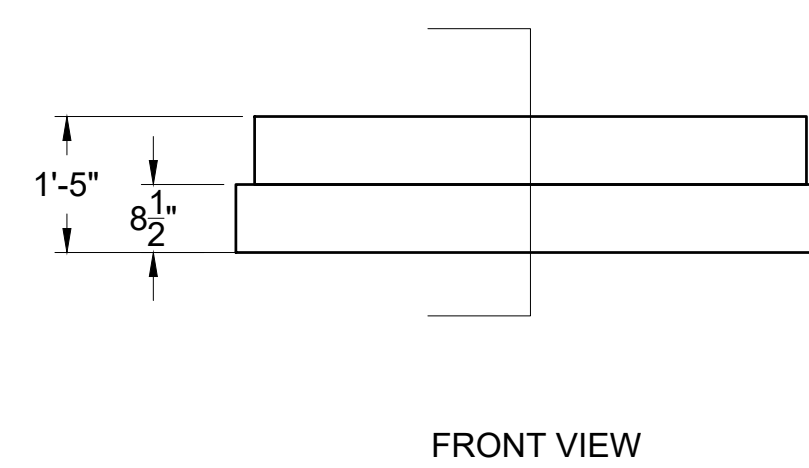
- PLATFORM B SITS ON TOP OF PLATFORM A.
- PATTERNS ON PLATFORM A AND B ARE MADE OF PLEXI.
- PLEXI IS FROSTED.
- PLEXI IS FLUSH WITH THE MDF LID.
- LED TAPE LIES IN CHANNEL BENEATH THE FROSTED PLEXI FACING UP.
- ACCESS POINTS MUST BE CREATED FOR LIGHTING AND SOUND ACCESSIBILITY.
- THE INSET STEP UNITS ARE COMPLETELY FACED.
- STOCK METAL GRATING IS ATTACHED TO FACING IN AREAS WHERE SPEAKERS ARE PLACED.
- SCREW PLACEMENT IS INCORPORATED INTO THE DESIGN.



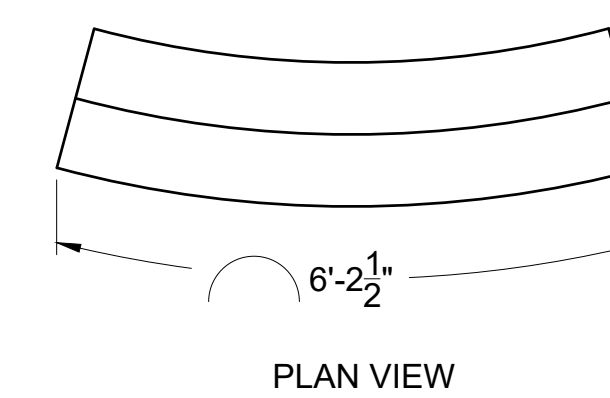
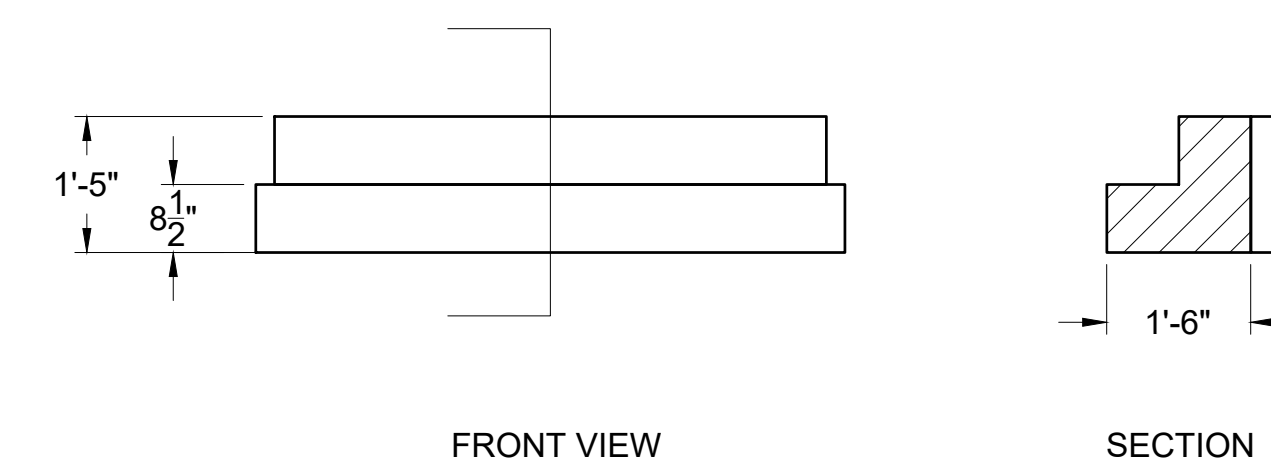
PLATFORMING RESEARCH IMAGE



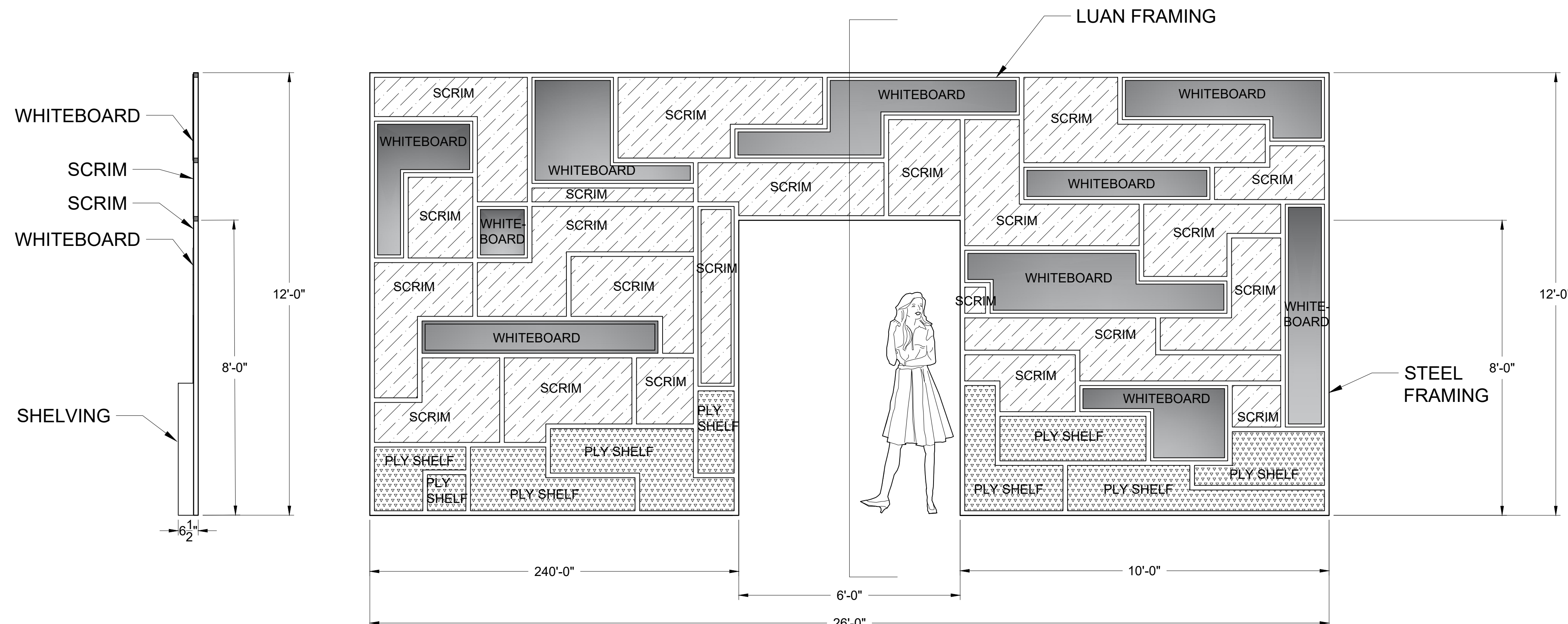
PLATFORM A
SCALE: 1/2" = 1'-0"



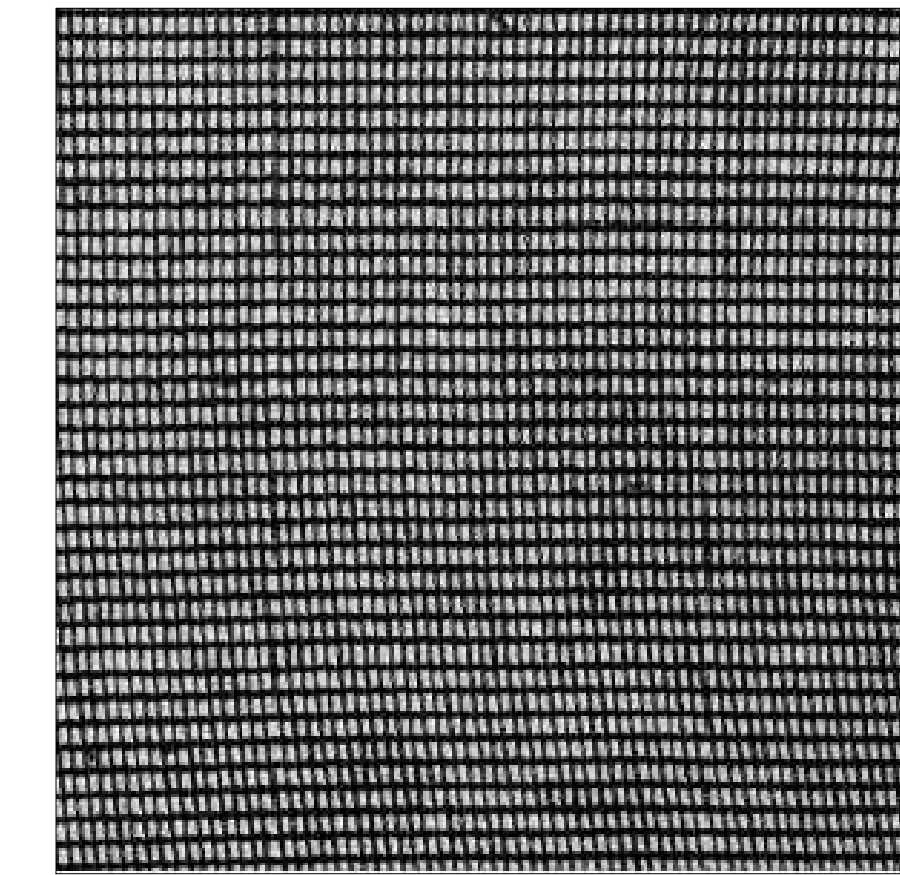
HOUSE LEFT STEPS
SCALE: 1/2" = 1'-0"



HOUSE RIGHT STEPS
SCALE: 1/2" = 1'-0"



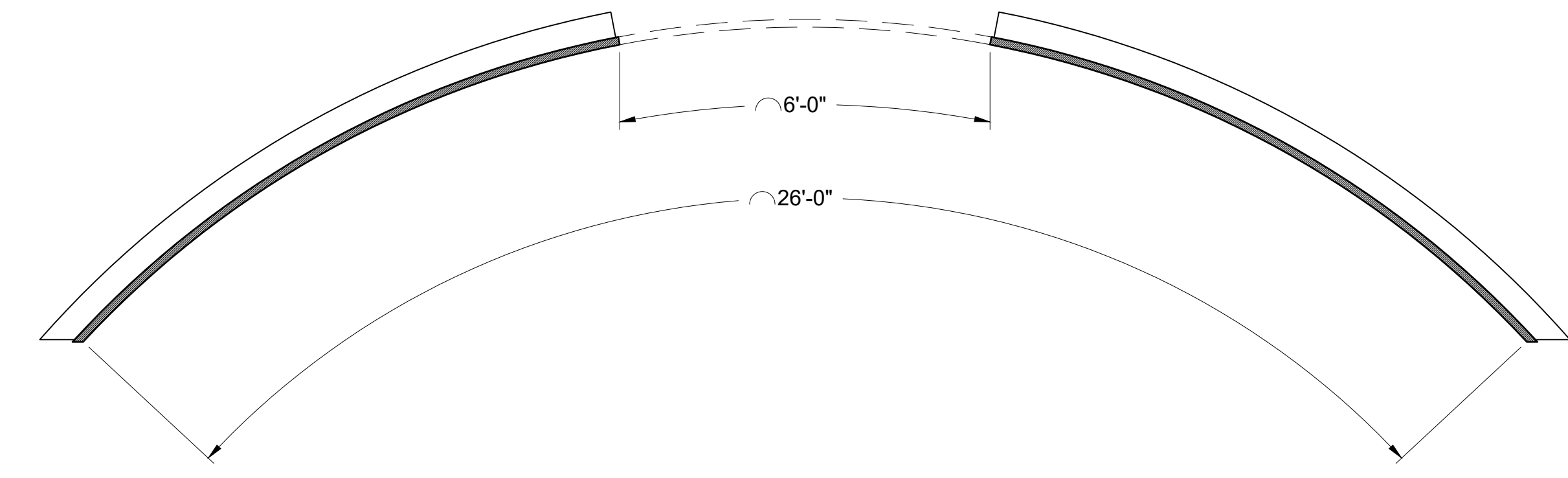
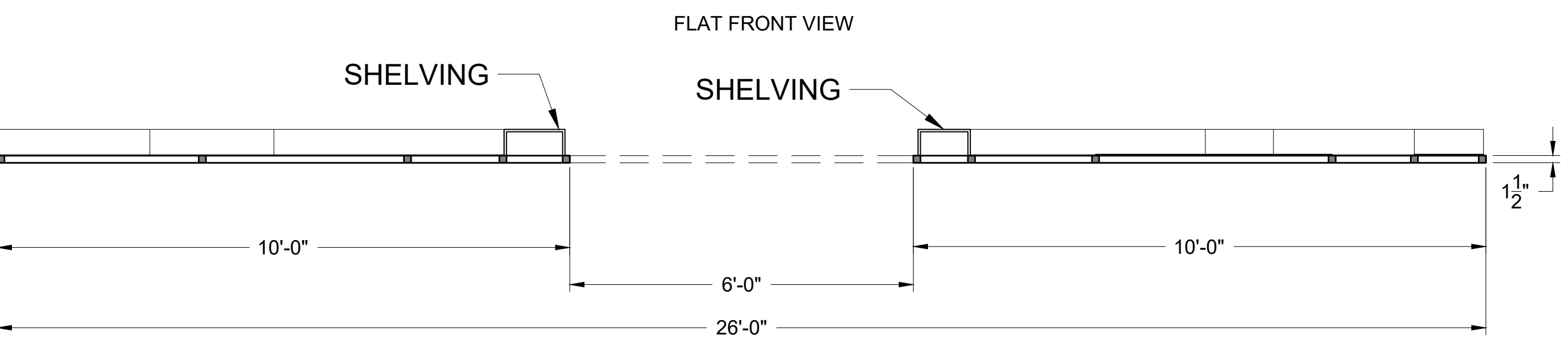
WHITEBOARD RESEARCH IMAGE



SCRIM RESEARCH IMAGE



SHELVING RESEARCH IMAGE



WALL A
SCALE: 1/2" = 1'-0"

- NOTES:
- WALL IS FRAMED WITH 1.5"X1.5" SQUARE TUBE STEEL.
 - WALL FRAMING IS PAINTED.
 - SCRIM IS PAINTED DARK GRAY TO SHOW PROJECTIONS.
 - WHITEBOARD LAMINATE IS WRITTEN AND PROJECTED ON.
 - 1" LUAN LIP FRAMES THE WHITEBOARD TO HIDE LED TAPE.
 - SHELVING IS MADE OF PLYWOOD.
 - SHELVING HAS A FAUX WOOD PAINTED FINISH.
 - PROPS ARE KEPT ON SHELVES.
 - ALL MATERIAL IS ATTACHED TO THE BACK OF STEEL FRAMING.
 - ENTIRE WALL AND SHELVING IS CURVED.
- SEE CURVED PLAN VIEW.